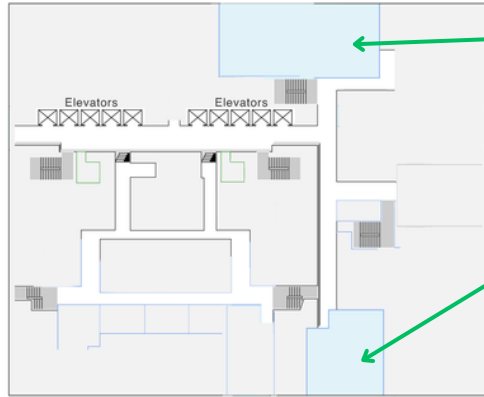


**SATURDAY MAY 17 - 6:30PM - 8:00PM**  
**FOOD + INSTALLATION VIEWING + Q&A**



**FILMS + PRESENTATIONS  
 + Q&A**

**INSTALLATIONS:**  
**BODY OF LIGHT**  
**THE DINNER TABLE**  
**LONELY ROOMS**  
**CUT FROM THE MARGINS (COLLAGES)**

**SATURDAY MAY 17 - 8:00PM - 9:30PM**  
**FILMS + Q&A**



**As Above So Below** by Robin Smith Fedock

A short experimental documentary that invites viewers to notice the unexpected world of entanglements that connect life, death, and fungi in Brooklyn's Green-Wood Cemetery. Through a multispecies lens, viewers are invited to consider the cycles, scales, and relationships at play.

*film: 14 min | advisors: Kelly Anderson, Sean Hanley, Rachel Stevens*



**Out From Under** by Prisca Edwards

Six individuals. One diagnosis. In *Out From Under*, people living with endometriosis gather for an art-centered workshop. Through collage and conversation, they transform isolating medical experiences into paths of connection and collective healing.

*film : 20 min + collage | advisors: Kelly Anderson, Walis Johnson, Lynne Sachs*



**A Grieving Heart** by Wendy Cong Zhao

An immigrant woman examines her past in the wake of her American ex-boyfriend's death. The film explores how love and loss change the ways she confronts her identity, memories and regrets.

*film: 12 min | advisors: Kelly Anderson, Andrew Lund, Natalie Conn*

Q&A with Sikuma Rai, Lucy Adams, Eric Juhola,  
 Yaching Cheung, Robin Smith Fedock,  
 Prisca Edwards, Wendy Cong Zhao

# HUNTER COLLEGE IMA MFA THESIS SHOW INTEGRATED MEDIA ARTS SPRING 2025

**FRIDAY MAY 16 \* 6:00PM-9:30PM**  
**&**  
**SATURDAY MAY 17 \* 4:30PM-9:30PM**

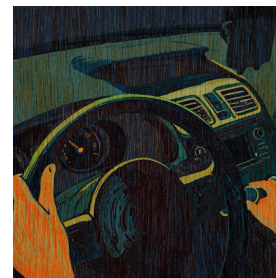
**FRIDAY MAY 16 - 6:00PM - 6:40PM - FILMS**



**All You Can Eat** by Kelly Schiesswohl

A 2D animated horror short that examines the ways in which patriarchal violence hides in plain sight. The film follows a small town bakery as its owner, wife, staff, and patrons feverishly prepare for the annual pie eating contest.

*film: 13 min | advisors: Kara Lynch, Poyen Wang, Amanda Bonaiuto*



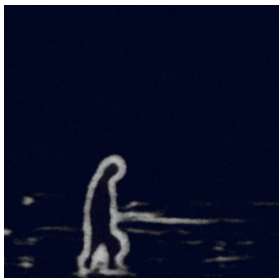
**UnPlug** by Haisi Hu

An Animated film that explores the psychological and societal impact of humanity's disconnection from nature which is intensified by our reliance on technology and media. It follows a young girl whose early love for animals fades as she enters adulthood, working in a sterile office analyzing video game avatars. Immersed in screens, she grows increasingly detached from the natural world. Through surreal, poetic imagery, the film reveals the emotional toll of this disconnection as her suppressed instincts erupt in chaotic animal forms.

*film : 20 min | advisors: Ricardo Miranda, Hans Tammen, David Briggs*



**FRIDAY MAY 16 - 6:40PM - 7:15PM**  
**INSTALLATION PRESENTATIONS**



**Island Child** by Rachel Jungeun Oh

An immersive installation exploring memory, dreams, and cultural identity through experimental animation, projection mapping, and spatial sound. By highlighting traditional Korean lullabies and abstract visual narratives, the work demonstrates that sound can function as a powerful form of visual art, creating emotional resonance and bridging individual and collective experiences, inviting the viewer to reflect on the profound ways sound shapes our understanding of identity, memory, and belonging.

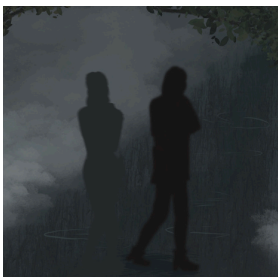
*installation | advisors: Andrew Demirjian, Hans Tammen, Kelly Anderson*



**Coffee Bindings** by M. Ermolenko

"An antique and jewelry repair shop becomes a home to a coffee reading that transports you between time and space, casting a spell between this world and the next through each cup you drink. Utilizing physical, digital, handmade linocut, and family archival, Coffee Bindings explores our connections to memory, space, and the diaspora connection when navigating family history and the aftermath of loss.

*installation | advisors: Reiko Tahara, Andrew Demirjian, Sha Sha Feng*

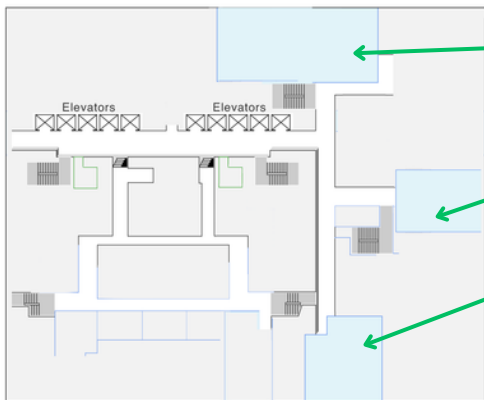


**One Can Only Dream** by Sophia Yacca

In dreams, we forget, we fear, we fracture—but sometimes, we find each other. One Can Only Dream of being found and being seen. In this interactive exhibit, you will find your way through the dreamlands in-game and discover where you are sent. Whether you belong or resonate is up to you. But as in dreams, sometimes we don't get that choice.

*installation | advisors: Andrew Lund, Poyen Wang, Ricardo Miranda*

**FRIDAY MAY 16 - 7:15PM - 9:30PM**  
**FOOD + INSTALLATION VIEWING + Q&A**



**FILMS + PRESENTATIONS  
 + Q&A**

**INSTALLATION:  
 ONE CAN ONLY DREAM**

**INSTALLATIONS:  
 ISLAND CHILD  
 COFFEE BINDINGS**

Q&A with Kelly Schiesswhol, Haisi Hu,  
 Rachel Jungeun Oh, Sophia Yacca, M. Ermolenko

**SATURDAY MAY 17 - 4:30PM - 6:00PM**  
**FILM - TALES OF MARUNI**

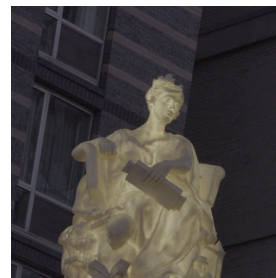


**The Tales of Maruni** by Sikuma Rai

The filmmaker journeys into the fading indigenous genre of Maruni—an eastern Nepali tradition of song and dance—narrating letters to her late grandfather in search of connection and clarity. Accompanied by her father and Nawin Khadka, a devoted folk musician from an upper-caste background, she traces echoes of memory, identity, and the fragile inheritance of indigenous culture.

*film : 75 min | advisors: Reiko Tahara, Andrew Lund, Rajan Shrestha*

**SATURDAY MAY 17 - 6:00PM - 6:30PM**  
**INSTALLATION PRESENTATIONS**



**Body of Light** by Lucy Adams

A two channel video installation exploring the life and legacy of artists' model and actress Audrey Munson. Munson posed for sculptures all over New York City in the early 1900's before she dramatically disappeared from public life. Through archival material and contemporary footage, Body of Light revives and reimagines her story.

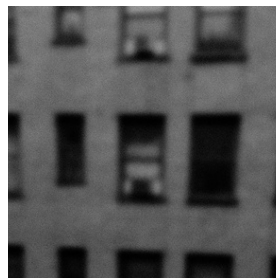
*installation | advisors: Andrew Demirjian, Alex Mallis, Christina Freeman*



**The Dinner Table** by Eric Juhola

A dual-projection installation that examines the relationship between familial rituals, memory, and the construction of self and how the absence of such rituals affects self-construction over time. To inform our notion of self, the project treats ritual as performance - as a societal script in which we are encouraged to participate, asking whether our sense of self dissipates with the fading rituals and to consider what is left behind.

*advisors: Andrew Demirjian, Zach Nader, Michael Gitlin*



**Lonely Rooms** by Yaching Cheung

Lonely Rooms is a multi-media installation, an imagined residential building that could exist in any metropolitan city—an architectural structure whose windows offer glimpses into the private lives of strangers. Through performance videos, etchings (printmaking), and projection mapping each "room" is a self-contained world, telling stories of alienation, loneliness, and solitude. But are the residents truly convinced that no one is watching? Are they ever really alone?

*installation | advisors: André Daughtry, Andrew Demirjian, Jon Levin*